

Community Risk Assessment

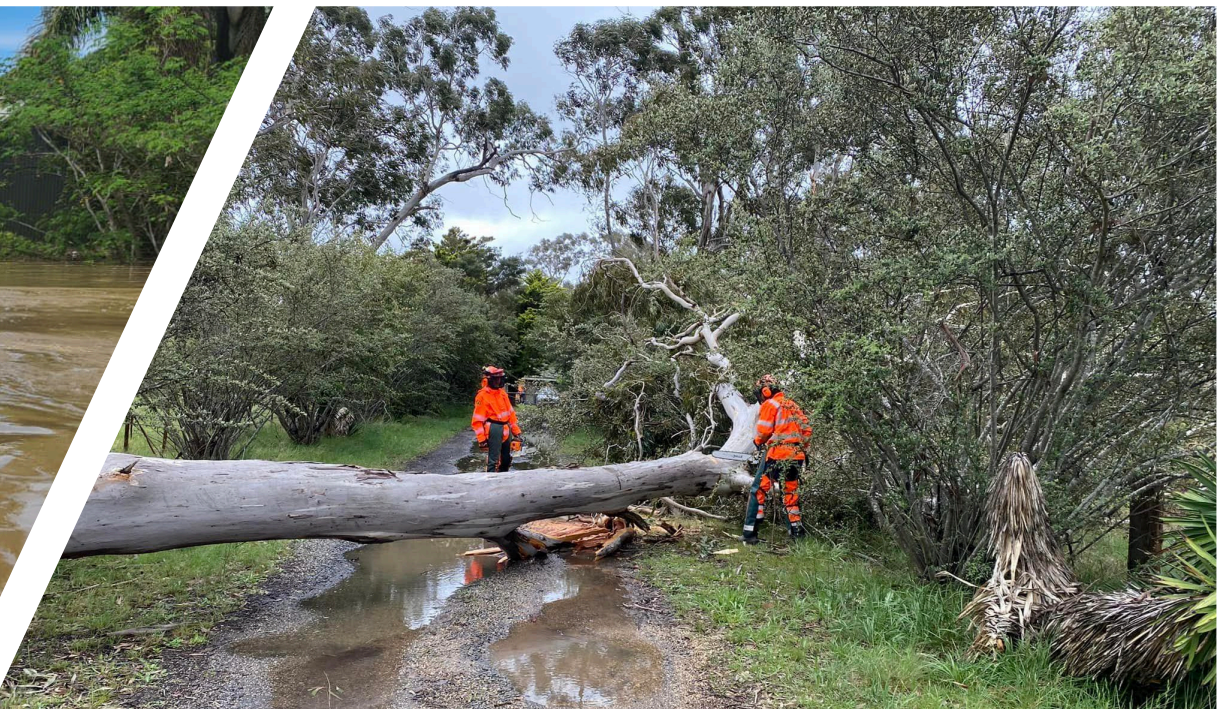


Sara Morgan

Senior Project Officer

NSW State Emergency Service







Capability Framework



-  NSW SES Legislated Combat Agency Roles
-  Core Capabilities
-  Enabling Capabilities

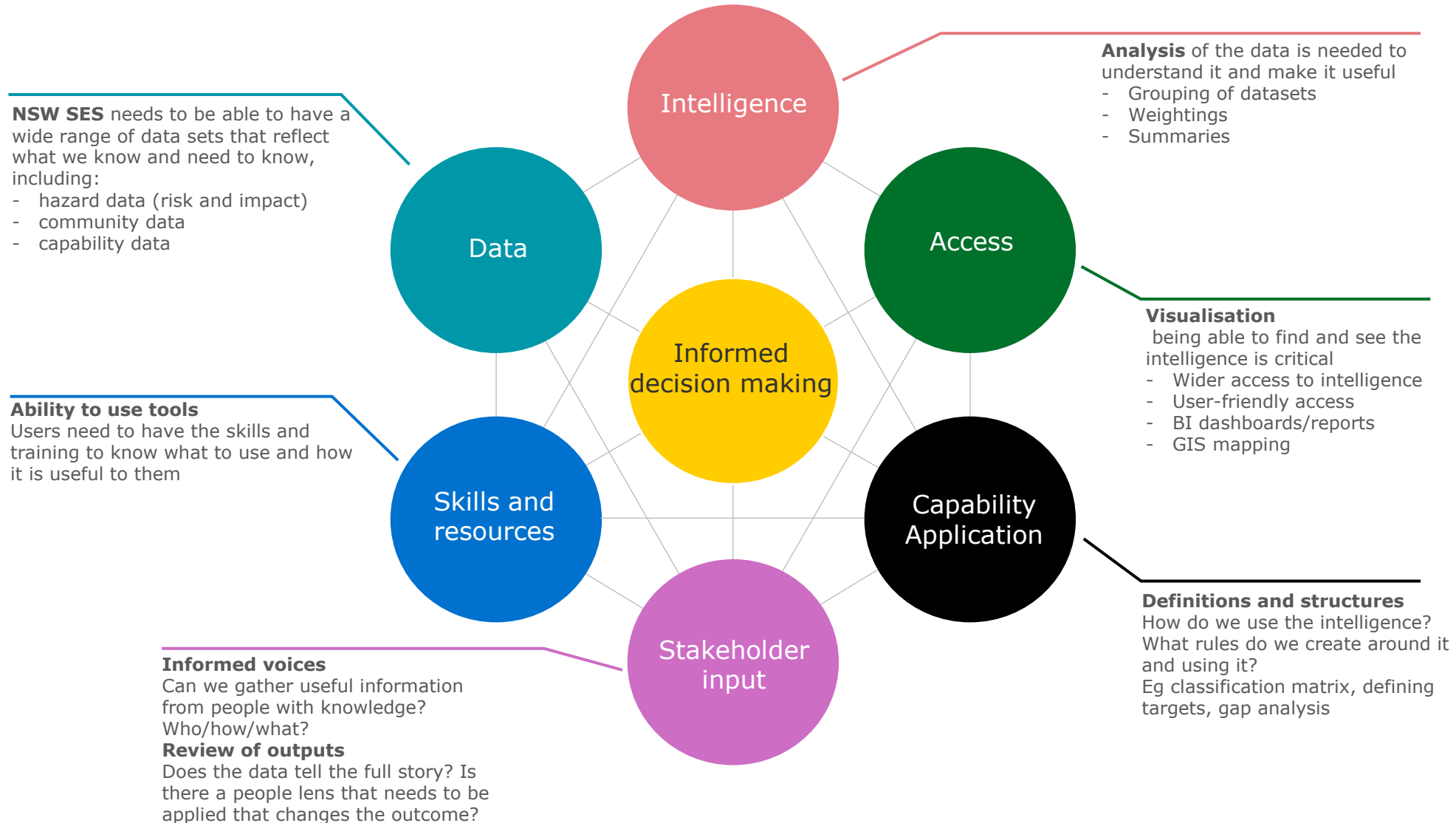




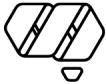
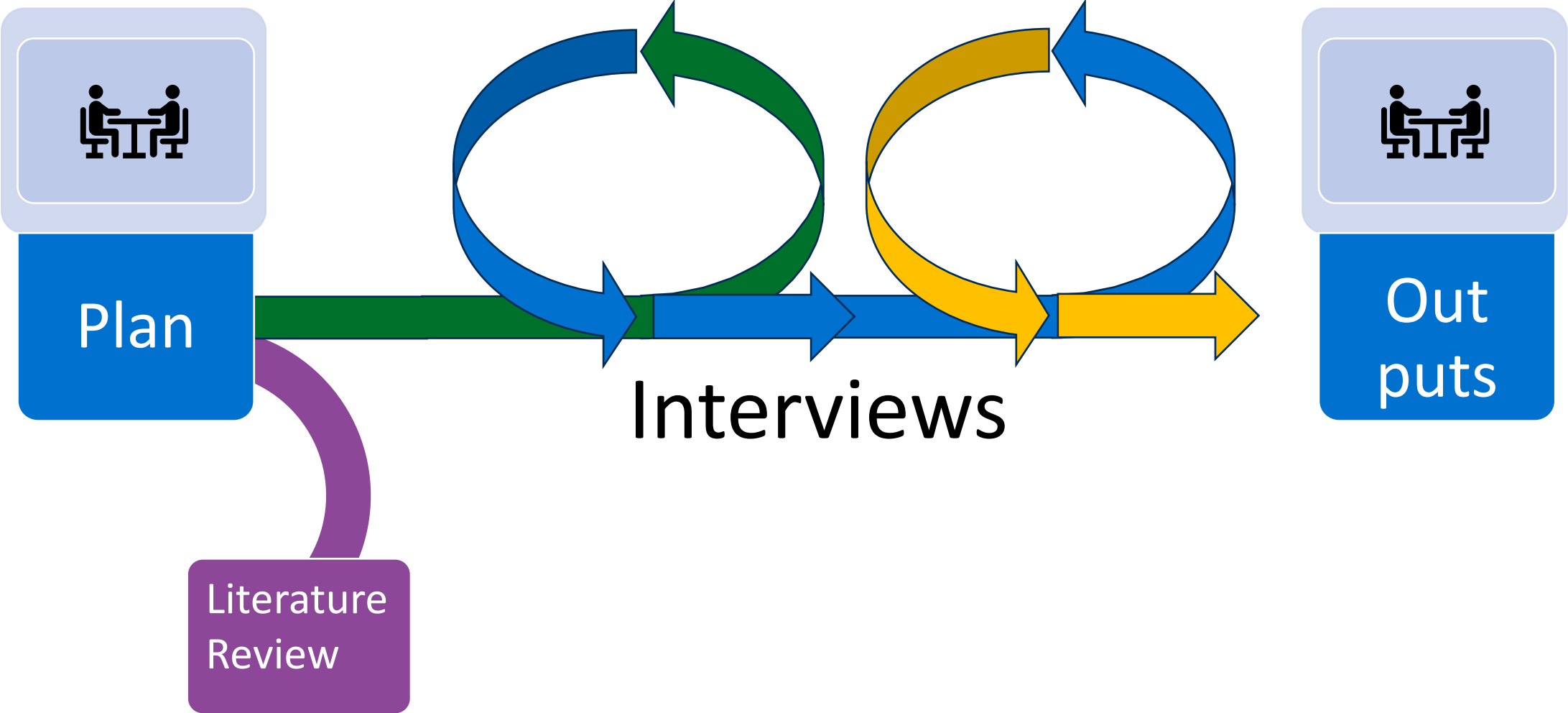
“The right things in the right place at the right time to support the right people to make the right decisions”



Connections



Research Collaboration



Now what?



-  NSW SES Legislated Combat Agency Roles
-  Core Capabilities
-  Enabling Capabilities



Community Risk Assessment

Natural

Hazard

Riverine flood

Flash flood

Storm

Tsunami



Community Risk Assessment

Natural Hazard

Riverine flood
Flash flood
Storm
Tsunami

Exposure

- population
- # buildings
- # dwellings
- land use
- transport routes



Community Risk Assessment

Natural Hazard

Riverine flood
Flash flood
Storm
Tsunami

Vulnerability

Human

- Demographics
- Awareness
- Capacity
- Resilience

Physical

- Building structures
- Infrastructure

Exposure

- population
- # buildings
- # dwellings
- land use
- transport routes



Community Risk Assessment

Natural Hazard

Riverine flood
Flash flood
Storm
Tsunami

**NSW SES
combat
role
impact**

Vulnerability

Human

- Demographics
- Awareness
- Capacity
- Resilience

Physical

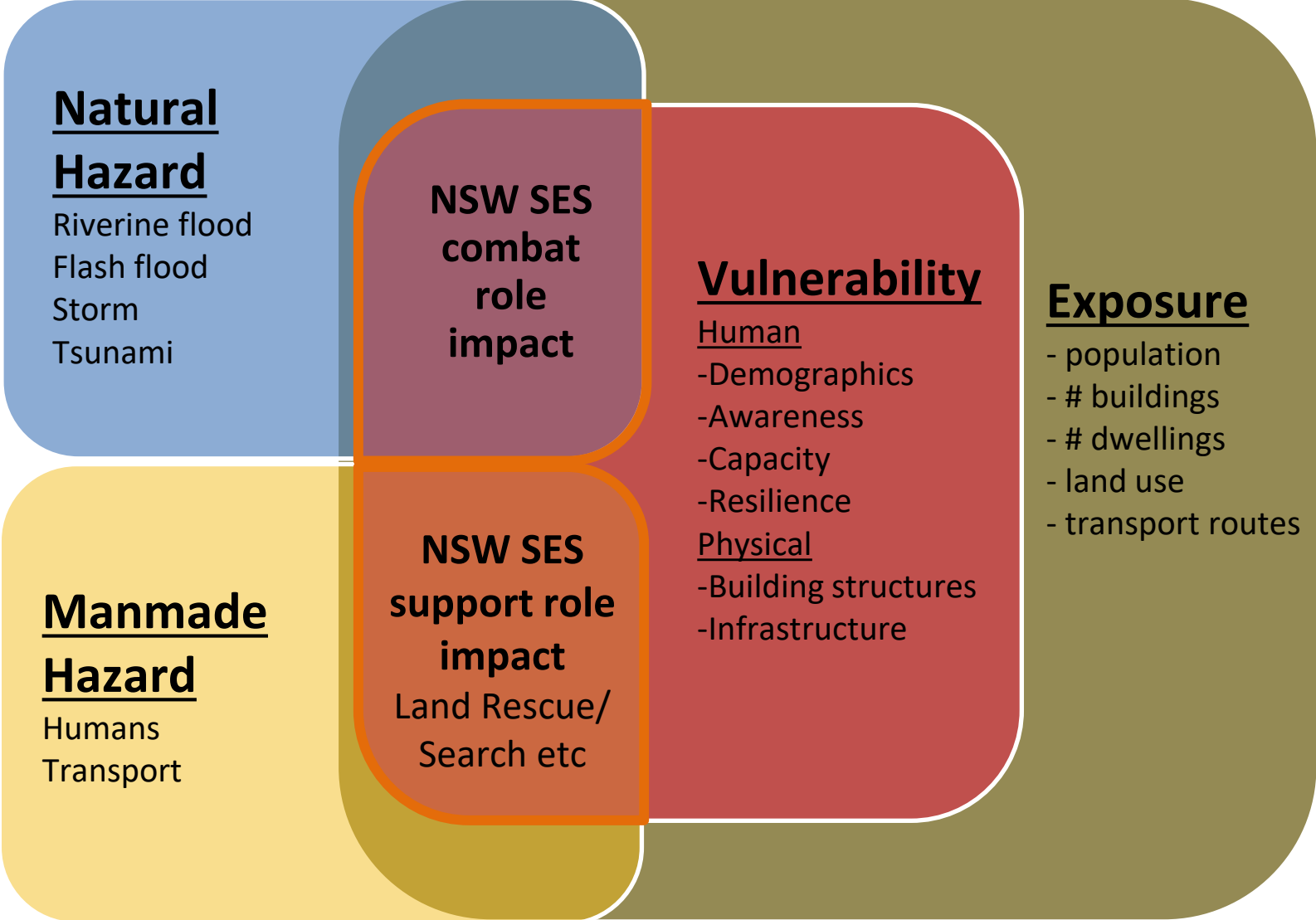
- Building structures
- Infrastructure

Exposure

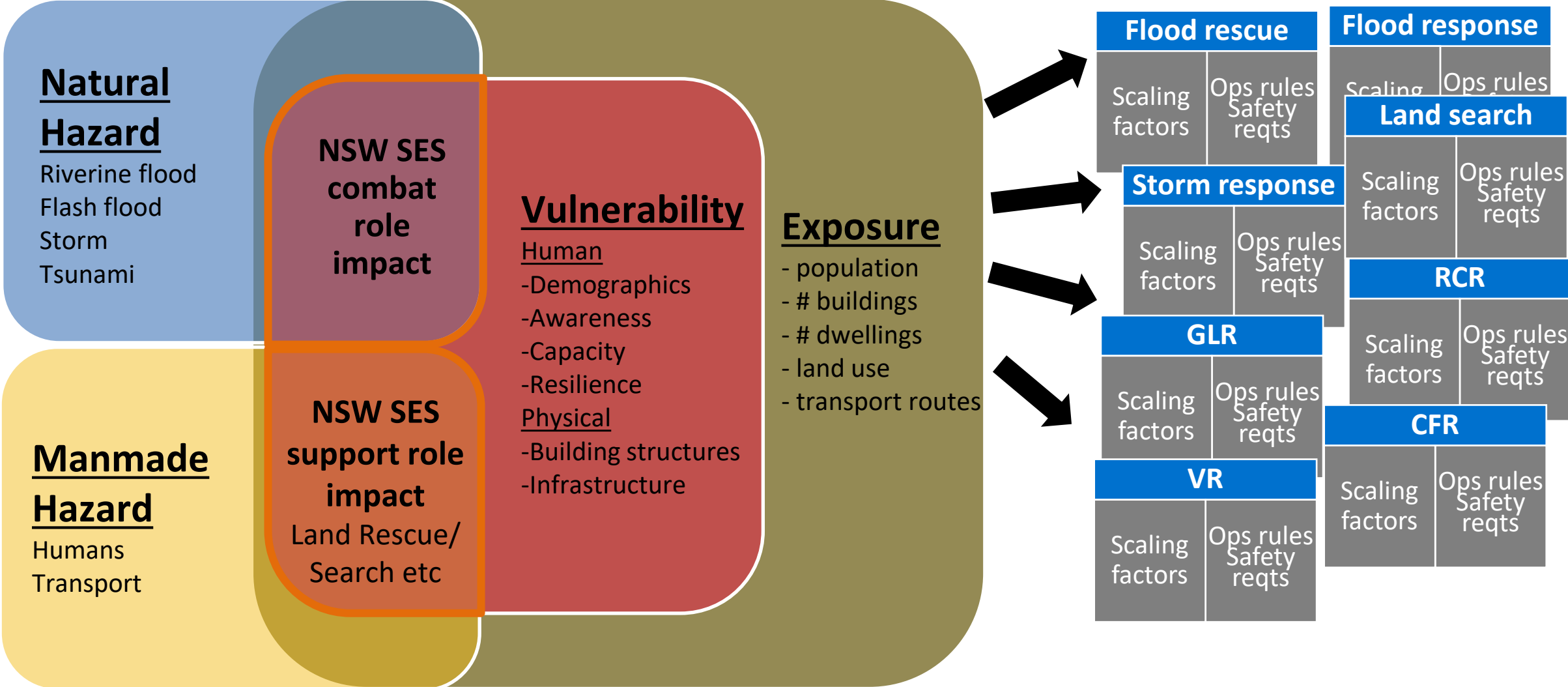
- population
- # buildings
- # dwellings
- land use
- transport routes



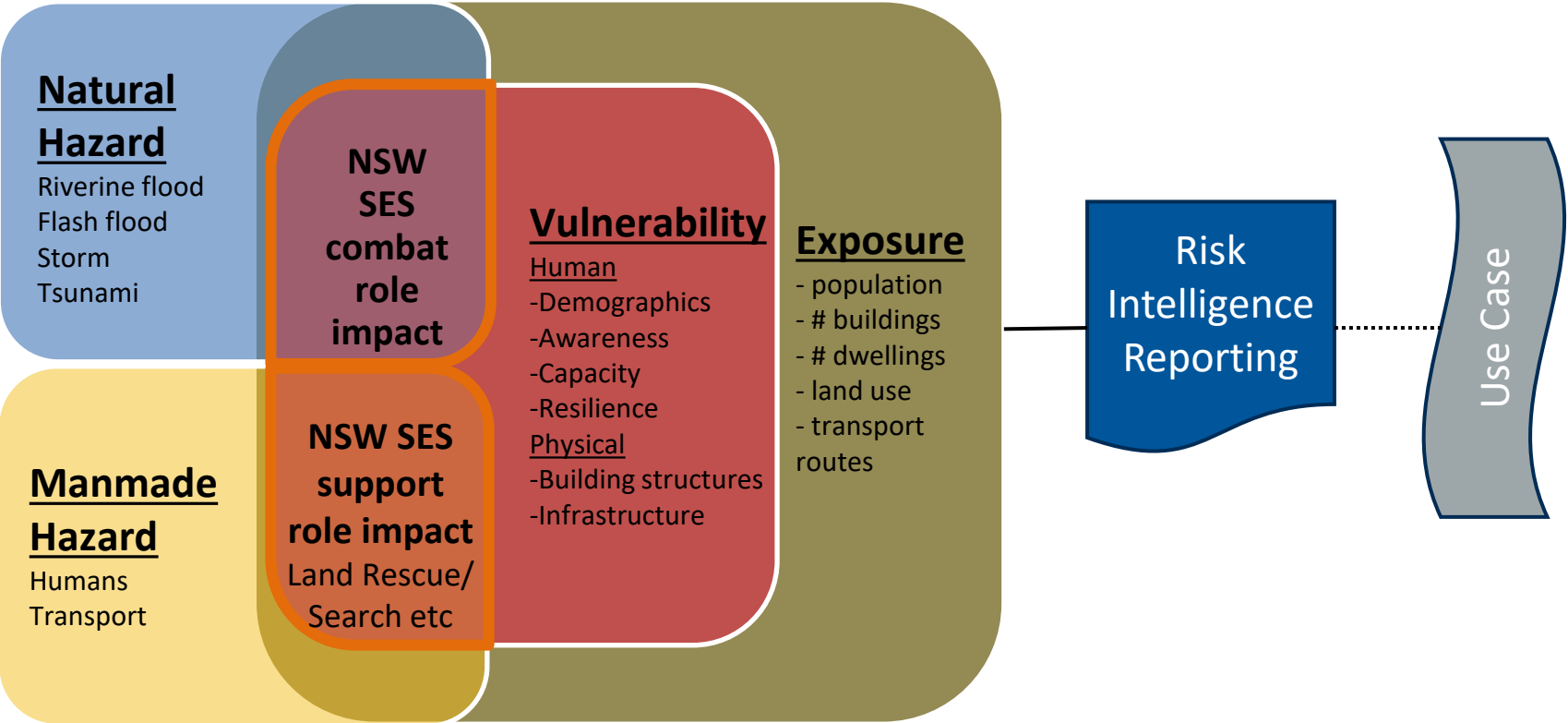
Community Risk Assessment



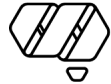
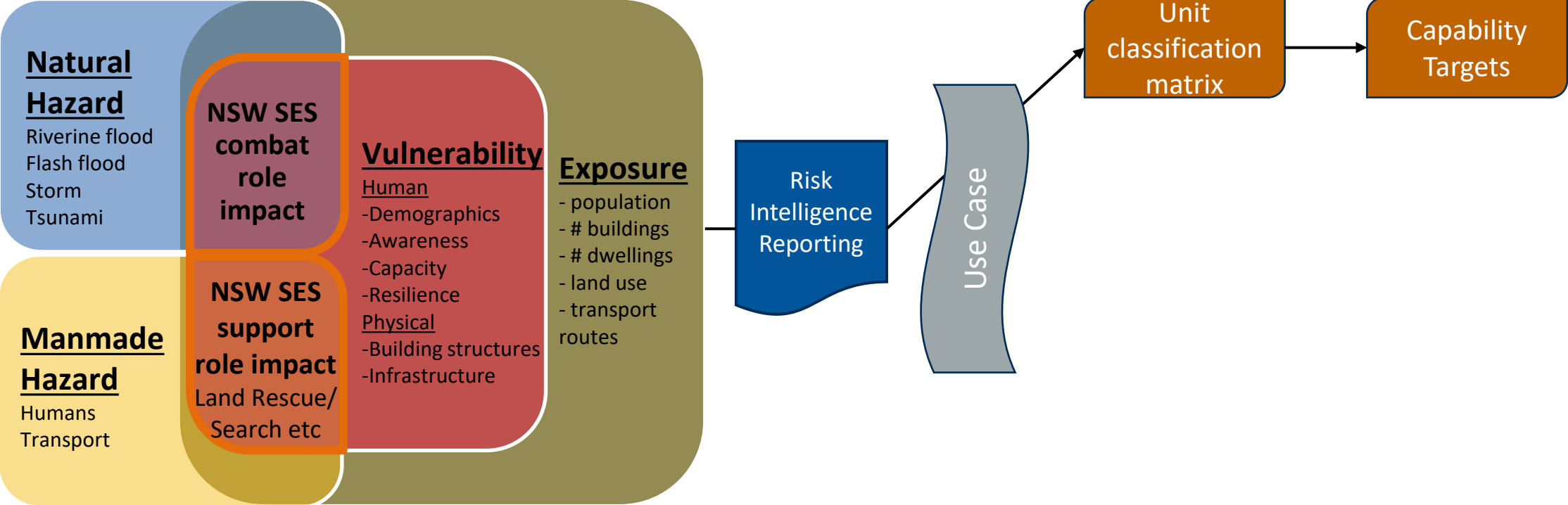
Community Risk Assessment



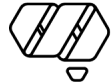
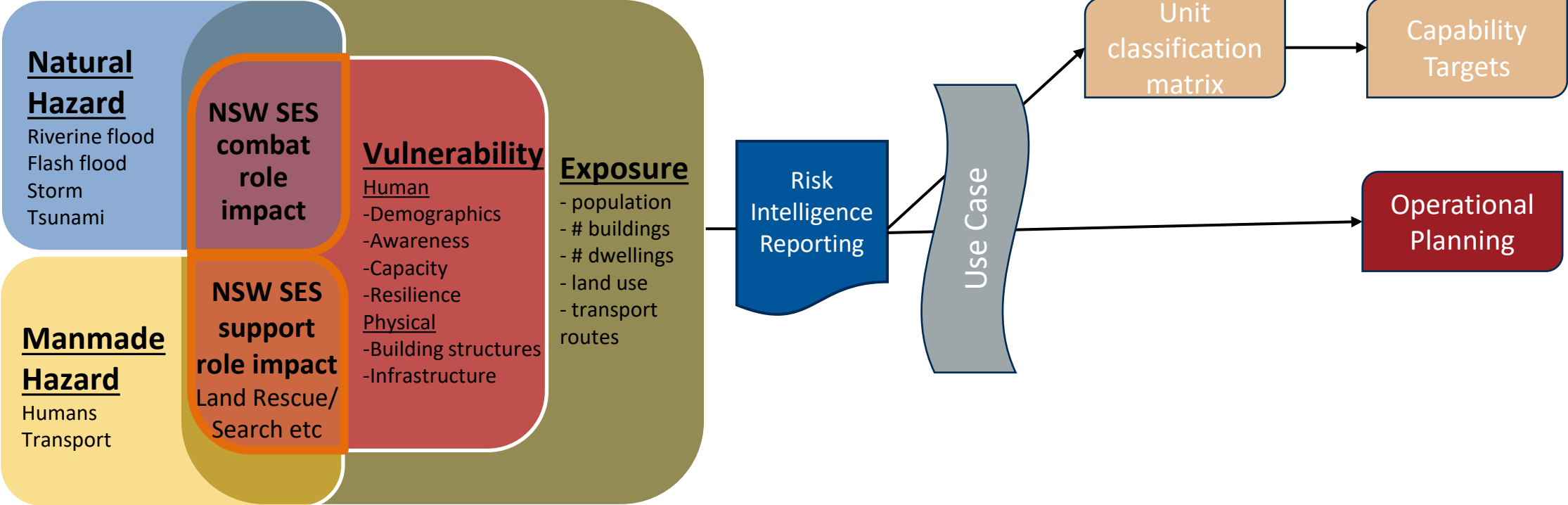
Community Risk Assessment



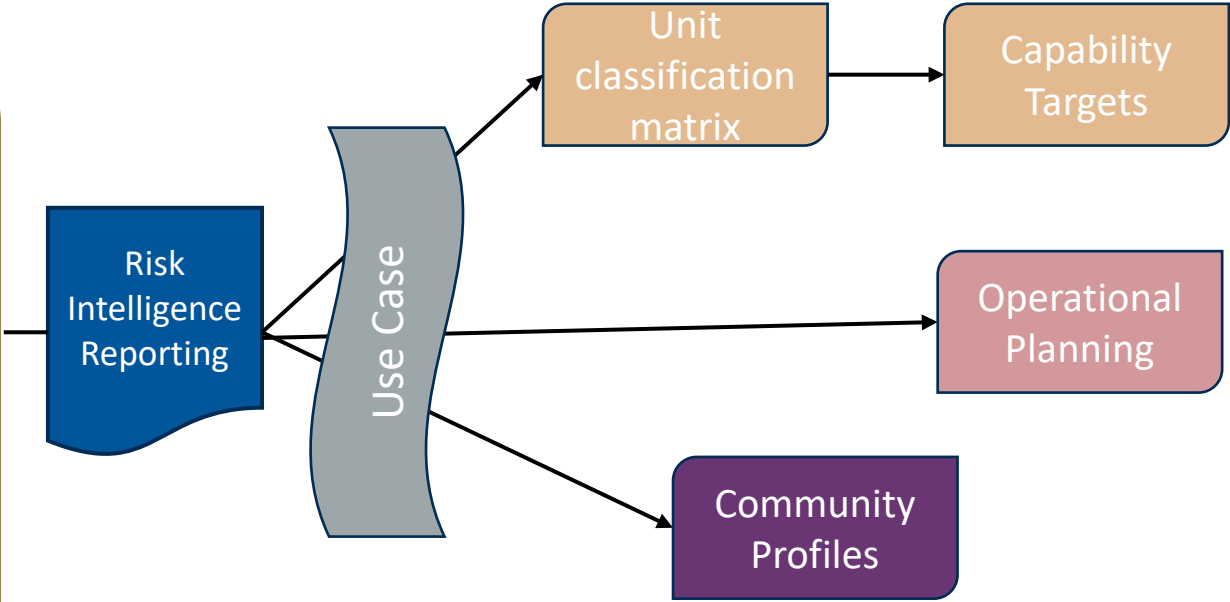
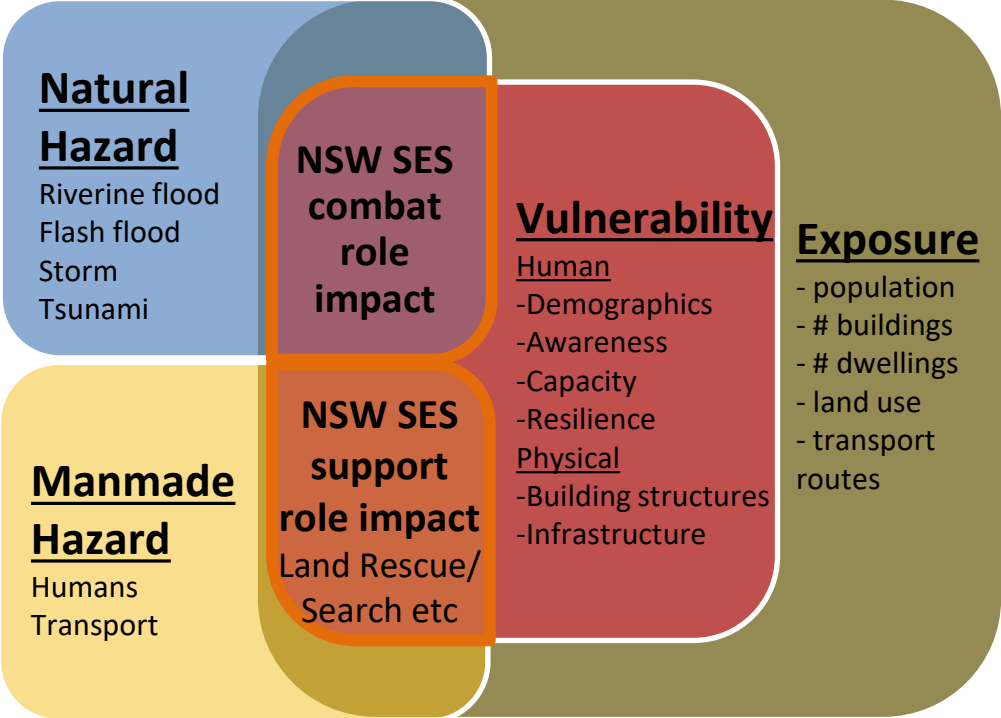
Community Risk Assessment



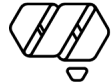
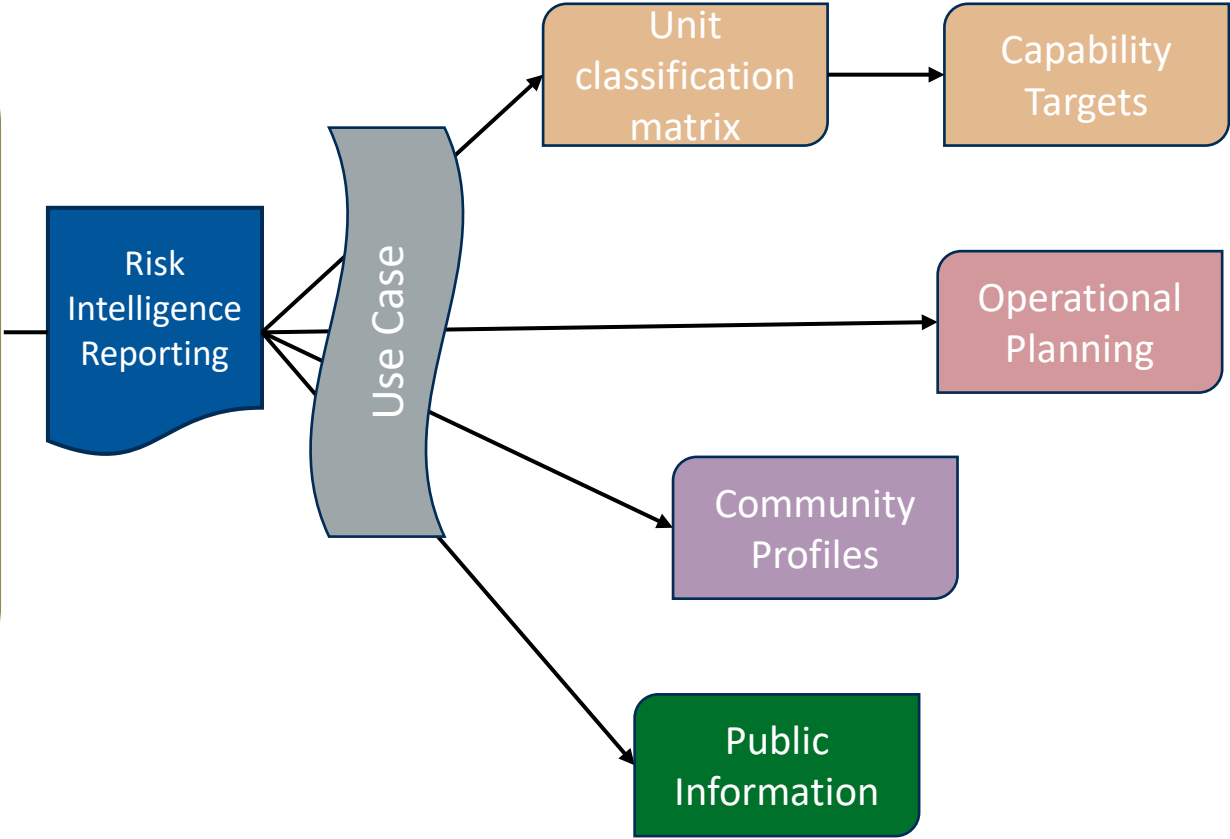
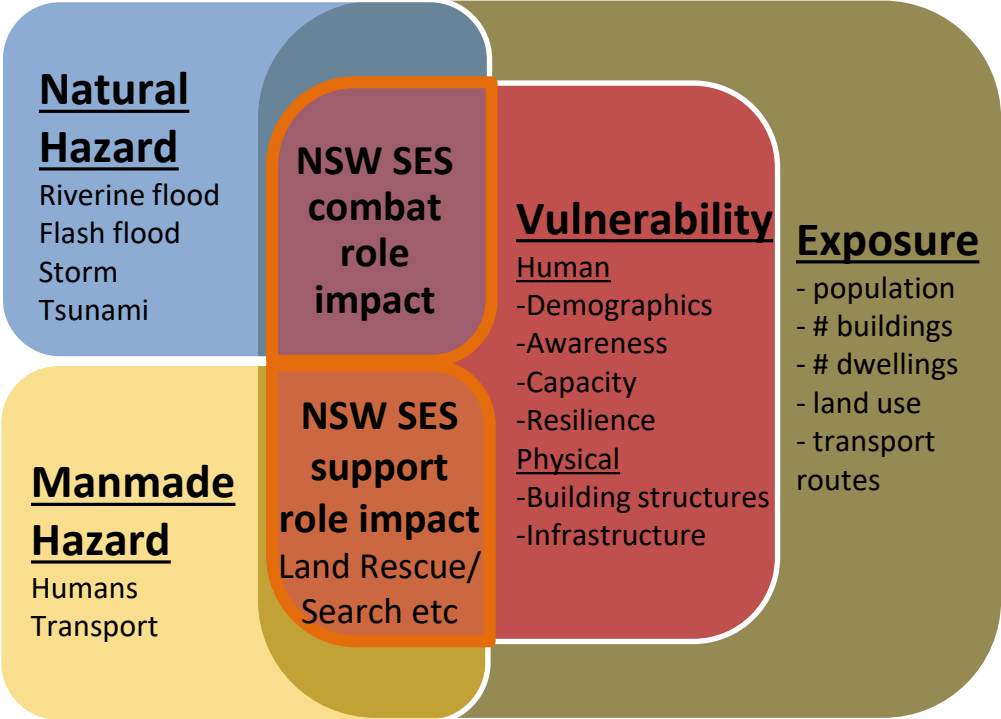
Community Risk Assessment



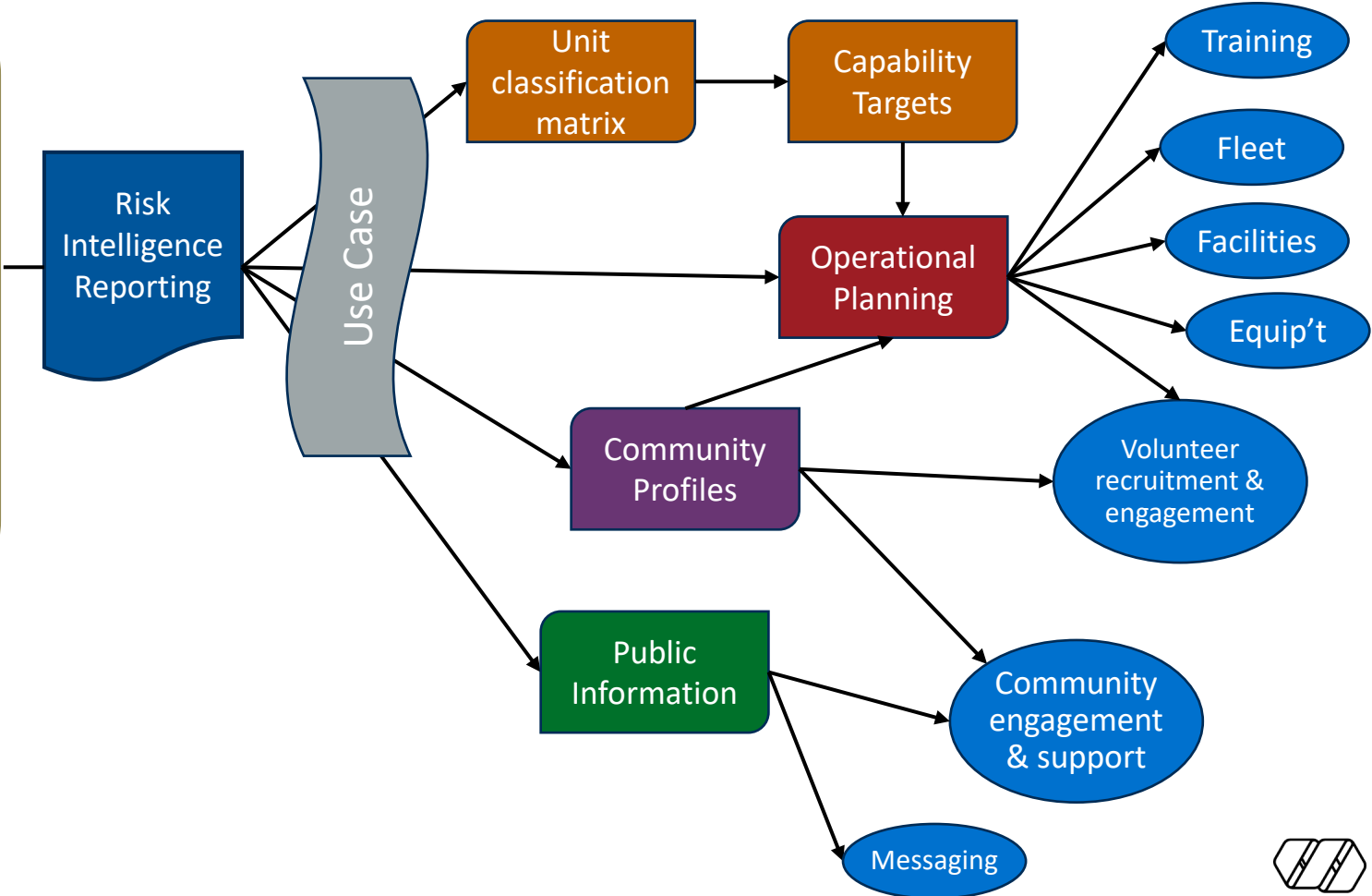
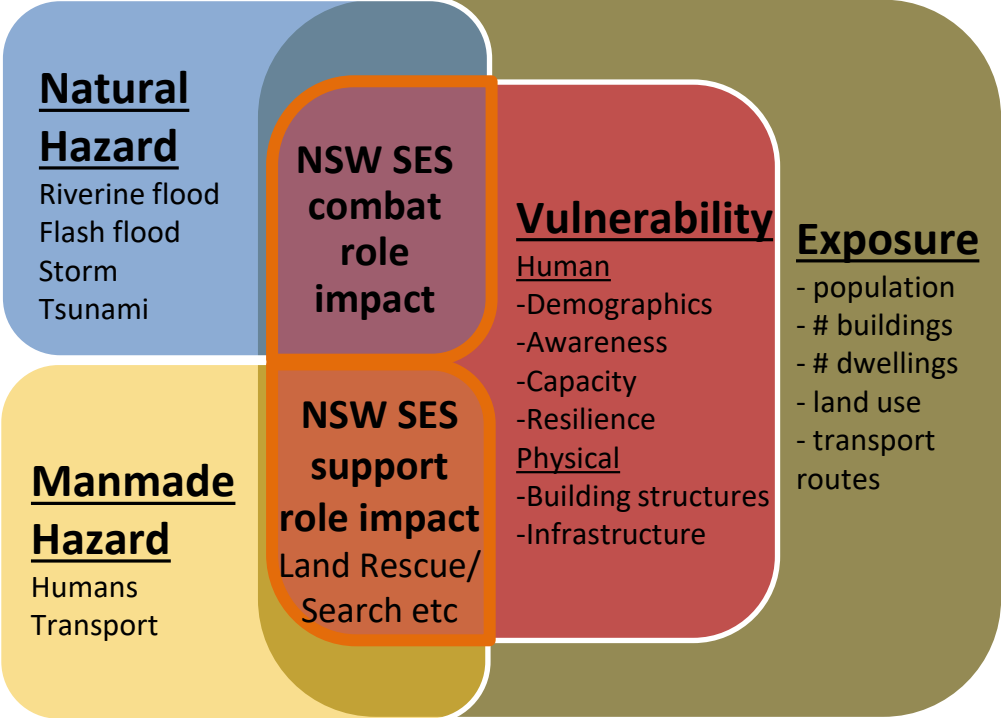
Community Risk Assessment



Community Risk Assessment



Community Risk Assessment



Future development?

- Further formal data analysis to create more detailed insights
- Improvement of our internal data sources
- Community consultation
 - Review and verification of risk analysis
 - Direct input and advice on prioritisation

