



Resilientsydney.com.au

**Stronger
together.**
**Prepared for
the future.**



Acknowledgement of Country

We acknowledge the Traditional Custodians of the land we meet on today. And pay respect to Elders past and present.



Elders and young Koories workshop in Marrickville, Gadigal Ngurra

RESILIENT SYDNEY

Resilient Sydney

33 local councils in Greater Sydney
working together to build
stronger communities and a more resilient
city.

Operating since 2015.
Governed by a regional steering committee
with council CEOs and GMs and state
government partners.



Launch of the Resilient Sydney Strategy 2025 – 2030



City resilience

“ The capacity of individuals, communities, institutions, businesses, and systems within a city to survive, adapt, and thrive no matter what kinds of chronic stresses and acute shocks they experience. ”

Greater Sydney

33 councils

5.3 million people

13,379 km²

\$490 billion GDP

9 rivers



Our Role

Understand the risks for Greater Sydney to support regional disaster adaptation planning

Identify shared priorities and opportunities to respond to regional shocks and stresses

Build the capacity of our sector through peer-to-peer learning and information sharing to build organisational resilience and support community resilience

Overcome the challenges of a complex governance environment by facilitating collaboration between Greater Sydney councils, state and federal government, academia and organisations, business and communities.

State and national disaster risk and resilience frameworks

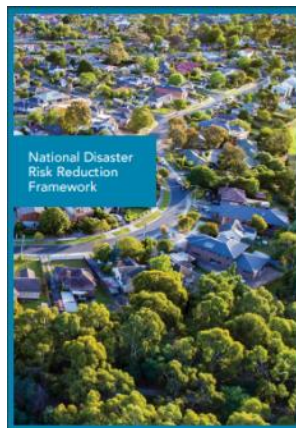
There are an increasing number of state and national frameworks that are relevant to how local councils manage disaster risk and resilience.



State Disaster
Mitigation Plan
2024



State Emergency
Management
Plan 2023



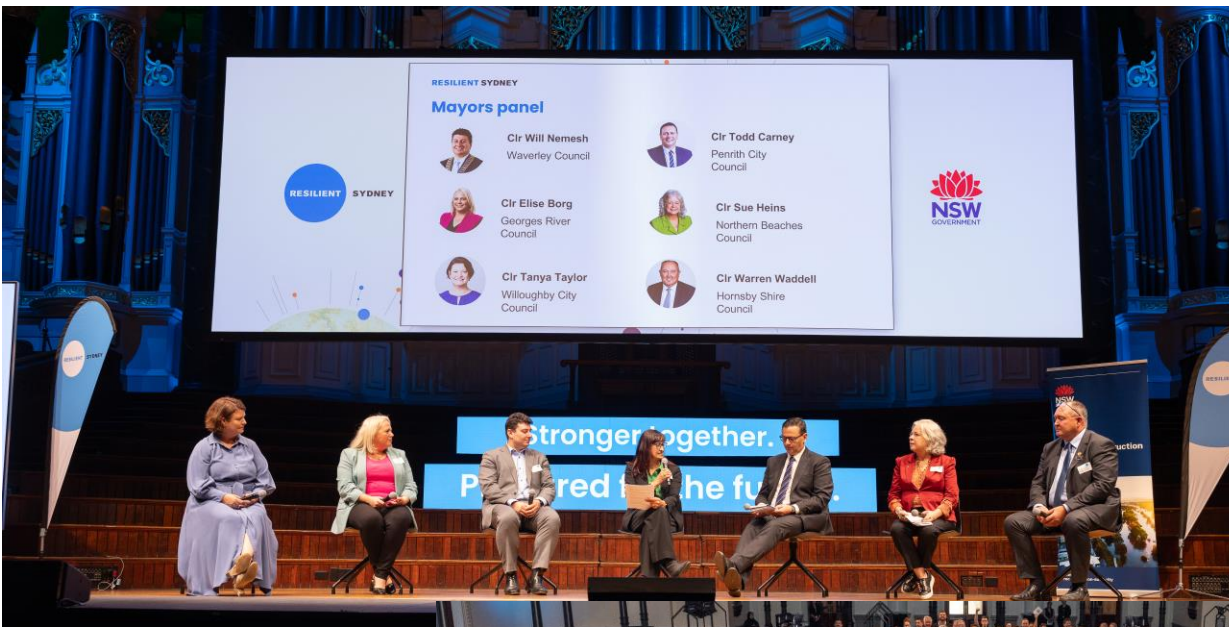
National Disaster
Risk Reduction
Framework 2018



National Critical
Infrastructure
Resilience
Strategy 2023



National Climate
Risk Assessment



Launch of the Resilient Sydney Strategy (2025-2030)



Resilient Sydney strategy 2025–2030

Vision

**Stronger together.
Prepared for the future.**



Mission

Collaborate to manage risk and build resilience in Greater Sydney through knowledge sharing, capacity building and planning for our communities, infrastructure, and natural environment.



The development of the resilient Sydney strategy 2025–2030 was funded under the joint Australian Government–NSW Government national partnership agreement on disaster risk reduction.

Resilient Sydney Strategy 2025 – 2030

and supporting documents



RESILIENT SYDNEY

Mayoral statement

Local government plays a critical role in supporting place-based resilience.

The resilience challenges facing Greater Sydney cannot be solved individually. They require a collaborative effort from local, state and federal governments, business and community.

The Resilient Sydney Strategy provides a pathway for collaboration to make Greater Sydney more resilient now and in the future.

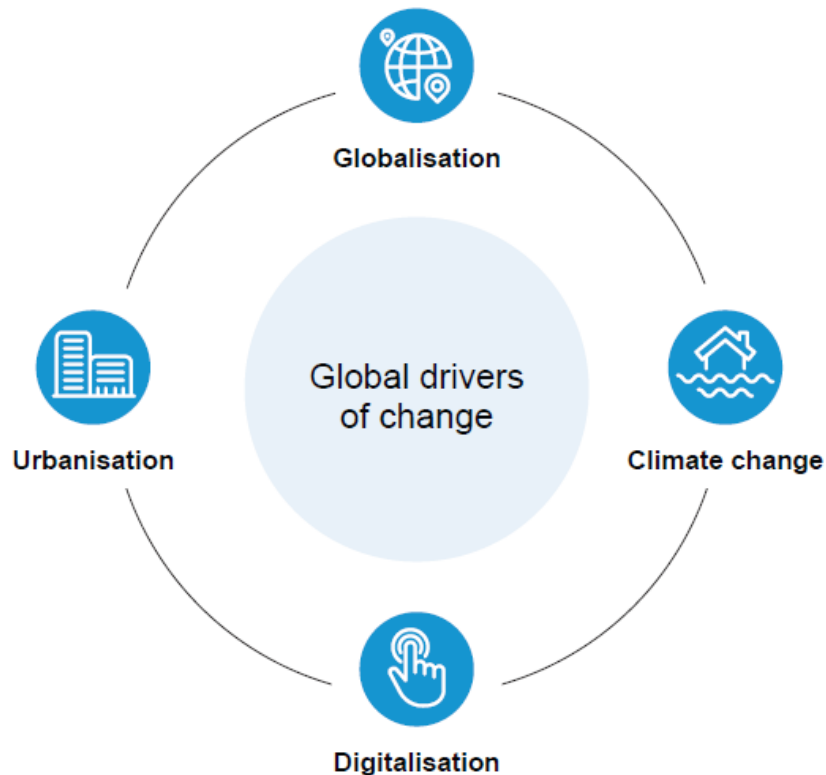
Working together, in genuine partnership, will ensure Greater Sydney is a place where all communities thrive.



Global Drivers

The Resilient Cities Network

- City resilience framework to assess strengths and weaknesses of cities
- Global drivers of risk

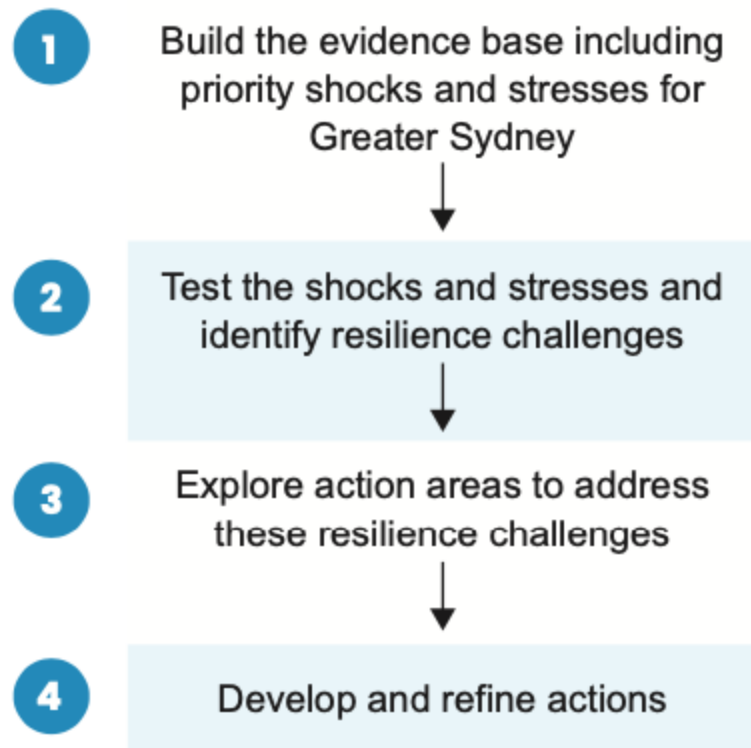


Strategy development

Two core components across 4 phases.

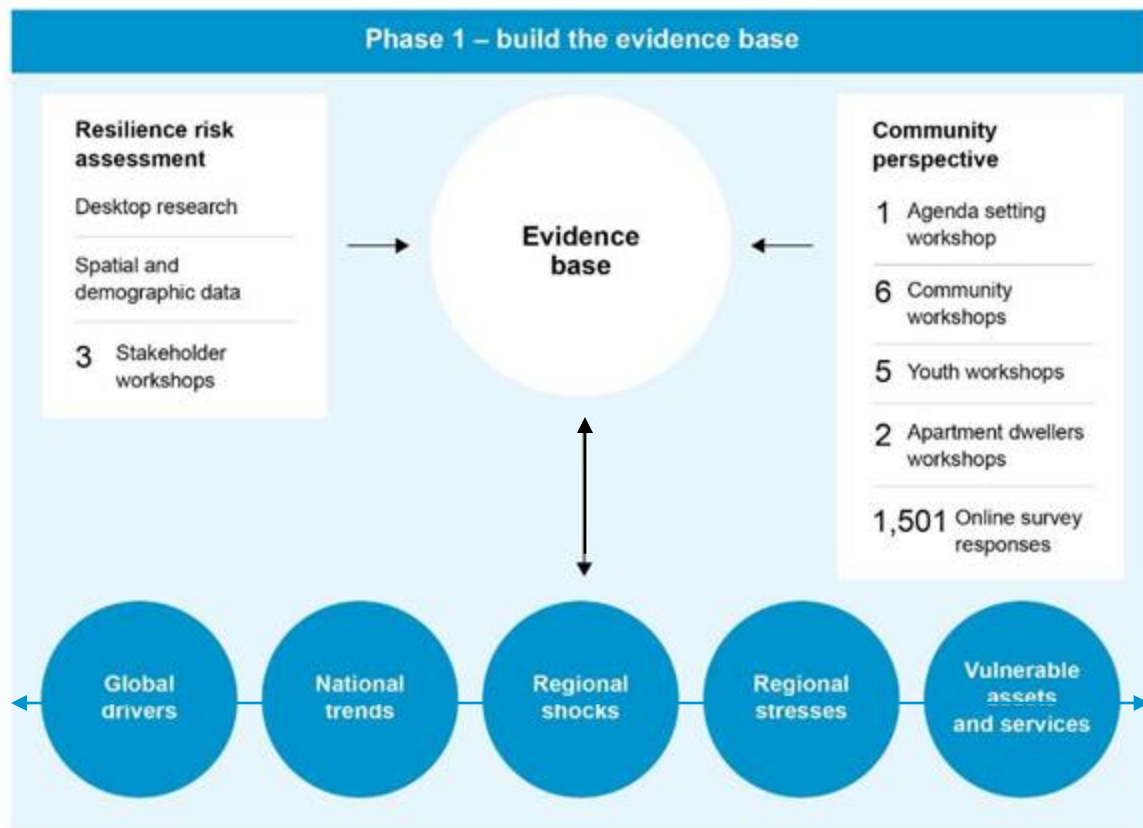
- A technical resilience risk assessment.
- Extensive community and stakeholder engagement across all phases

Detailed reports available to your organisation.



Methodology

- **All hazards** risk assessment - likelihood and consequences of shocks.
- **National trends** and projections to inform future scenarios.
- **Interdependency** between the **shocks** and **stresses**.





Deliberative panel workshop



Blacktown multicultural roundtable



Redfern youth workshop



Picton First Nations workshop

Engagement

Over 2000 community members and 200 organisations

- 6 community workshops across Greater Sydney
- 2 online focus groups with apartment residents
- 2 deliberative community panel workshops
- 5 youth workshops and survey
- 2 First Nations workshops
- 5 multicultural roundtables
- 2 programs with university students
- Online survey with 1501 responses
- A summit with 171 stakeholders
- 4 workshops with resilience ambassadors
- Stakeholder workshops on public health, arts and culture, and volunteering
- Over 100 stakeholder interviews and meetings

Shocks for Greater Sydney

- Acute shocks are sudden events that threaten a city.
- Examples include natural disasters, heatwaves, cyber-attacks and infrastructure failures.

International crisis



Economic crisis



War & conflict



Cyberattack



Disease outbreak

Natural hazards



Heatwaves



Bushfires



Flooding



Storms



Coastal hazards

Critical infrastructure failure



Energy



Transport



Digital networks



Water



Waste



Shelter

Stresses for Greater Sydney

Stresses weaken the fabric of a city on a day-to-day basis.

Stresses can be related to health, wellbeing, economy, society, governance, built infrastructure & natural environment.

Stresses that increase vulnerability for individuals and communities relating to geography and demographics

Inequity



Health services



Education



Housing



Cost of living



Transport

Wellbeing



Mental health



Family violence



Chronic health conditions



Social isolation & lack of community connections



Racism & vilification

Stresses that undermine the ability of the city to function effectively and manage increasing risks

Governance



Fragmented governance



Reducing social cohesion



Low trust



Environmental degradation



Disrupted supply chains

Resilience challenges for Greater Sydney



Environment under pressure and increasing extreme weather events



Inequitable services and opportunities



Depleted community resilience and growing sense of uncertainty



Using lessons learnt to better prepare and respond in the future



Complex governance in the context of declining trust

Direction 1

Care for the environment

A city where we care for the environment and live sustainably

Direction 2

People-centred city

An equitable city with climate resilient neighbourhoods

Direction 3

Connect for strength

An inclusive city that supports social connections and community agency

Direction 4

Be ready

A city where people and organisations are prepared for emergencies

Direction 5

One city

A city with coordinated governance that people trust

Direction 01

Care for the environment

A city where we care for the environment and live sustainably

- 1 Embed First Nations knowledge and practices in land management
- 2 Connect and protect green and blue places
- 3 Increase tree canopy and habitat across Greater Sydney
- 4 Increase biosecurity awareness
- 5 Secure the future of Sydney's water supply
- 6 Support electrification and the energy transition
- 7 Improve the security of Greater Sydney's food systems
- 8 Address Greater Sydney's waste crisis

Direction 02

People-centred city

An equitable city with climate resilient neighbourhoods

- 9 Plan and design places to withstand increased natural hazards
- 10 Improve the heat resilience of communities in Greater Sydney
- 11 Increase and improve affordable rental housing
- 12 Better connect communities with active and public transport
- 13 Create inclusive and welcoming public places

Direction 03

Connect for strength

An inclusive city that supports social connections and community agency

- 14 Embed dignity principles in leadership and engagement
- 15 Replenish resilience through creative and cultural expression
- 16 Support First Nations self-determination
- 17 Facilitate community-led action
- 18 Engage children and young people in decision-making about the future and their wellbeing
- 19 Measure and value social capital
- 20 Facilitate inclusive access to social infrastructure

Direction 04

Be ready

A city where people and organisations are prepared for emergencies

- 21 Embed people-centred emergency planning
- 22 Research community preparedness and support coordinated campaigns
- 23 Improve emergency awareness in apartment buildings
- 24 Coordinate and encourage volunteering
- 25 Collaborate to be better prepared for emergencies

Direction 05

One city

A city with coordinated governance that people trust

- 26 Promote and participate in collaborative governance and engagement for Greater Sydney
- 27 Adopt region-wide data and tools
- 28 Enhance the Resilient Sydney data platform
- 29 Strengthen the resilience of council assets
- 30 Galvanize resilience across Greater Sydney

Case studies



Caring for vulnerable coastal sites

In the Sutherland Shire, the community plays an important role in caring for the environment. There are 485 bushcare volunteers looking after 109 sites. Aboriginal Heritage Officer, Graham Avery, leads free cultural tours at Sutherland Shire community nursery, building knowledge about Dharawal culture and language within the local community and for council staff.

Sutherland Shire Council has constructed an elevated walkway at Grays Point to protect the



Recovery coordination in Wollondilly

The resilient Wollondilly mobile recovery van and the disaster recovery volunteer database are key resilience projects enhancing disaster preparedness and recovery within the Wollondilly local government area.

The disaster recovery volunteer database is designed to connect spontaneous volunteers with volunteer agencies, streamlining the coordination and deployment of support during recovery efforts following a disaster. It also serves as a tool for



EmergencyRedi week

Despite the increasing prevalence and intensity of extreme weather events, the Australian Red Cross reports that only one in three Australian households have discussed practical emergency plans with their children and even fewer, only 27% have talked about how to mentally prepare for disasters.

The Australian Red Cross EmergencyRedi Week is an annual initiative to raise awareness about the importance of being prepared for emergencies. The campaign encourages people to download



Resilientsydney.com.au

**Stronger
together.**
**Prepared for
the future.**

