

Coastal Futures CoLabs Pilot

Building climate resilience in Garden Island Sands



Natural
Hazards
Research
Australia



HUON VALLEY
COUNCIL



CMS
CENTRE FOR MARINE SOCIOECOLOGY



A photograph of four people standing on a rocky riverbank, looking across a river towards a densely forested hillside. The people are seen from behind. The hillside is covered in trees with green and brown foliage. The river is calm and reflects the sky. The foreground is a rocky shore. The text 'Lands and waters of the Melukerdee and Lylequonny people of the South East Nation' is overlaid on the left side of the image. On the right side, there are white hand-drawn wavy lines representing water.

Lands and waters of the Melukerdee and
Lylequonny people of the South East Nation

The team



Dr. Malcolm S.
Johnson



Bianca Suarez



Rosie Katunar



Hevi Hardini



Edith Shum

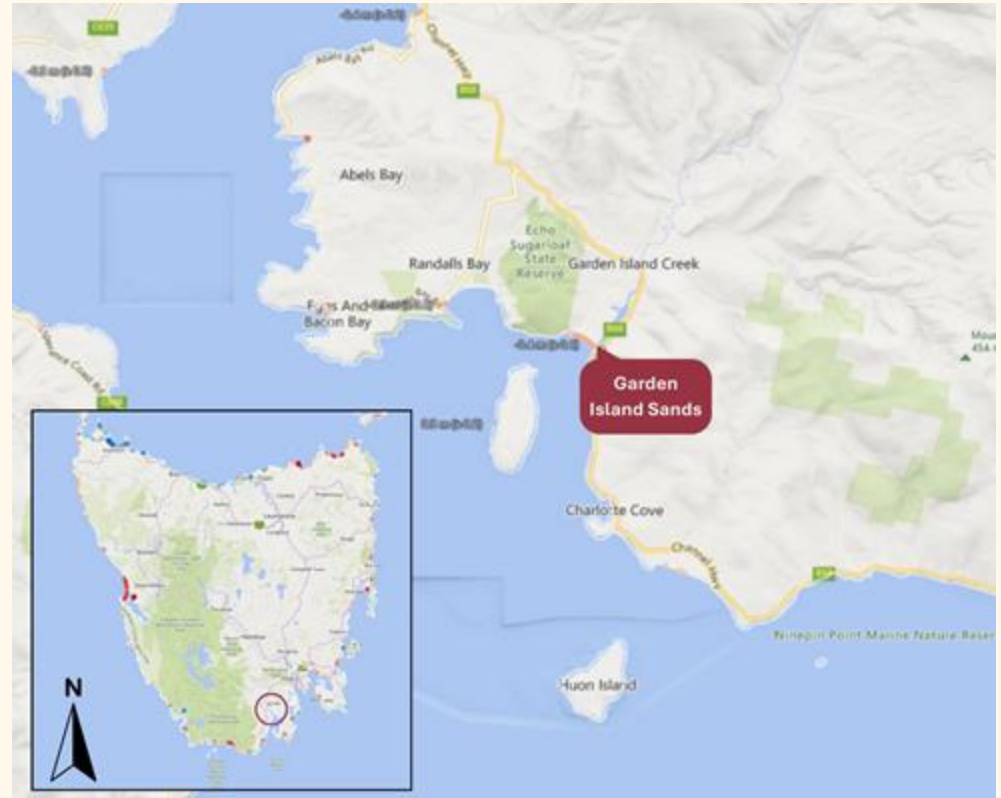


Kianna Gallagher

Impactful^{!!}



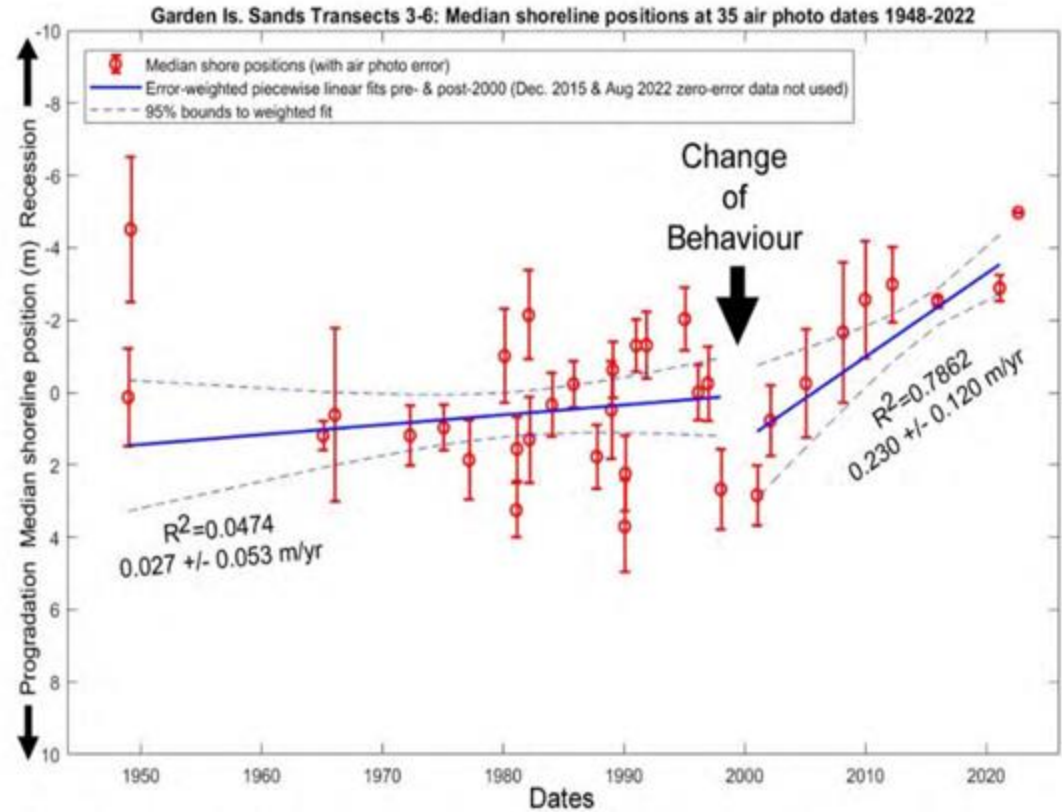
Context



Context



Context



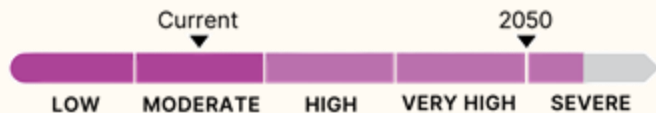
Source: Sharples, C., 2023. A Geomorphic Investigation of Shoreline Change at Garden Island Sands, Southern Tasmania.

Context



Priority risk snapshot: Coastal communities and settlements

Risks to coastal communities from sea level rise, particularly where legacy and future planning and decision-making increases the exposure of settlements.



Communities – urban,
regional and remote



The problem

01
Ecology



Rapid Erosion

02

People &
Society



Makes people sad

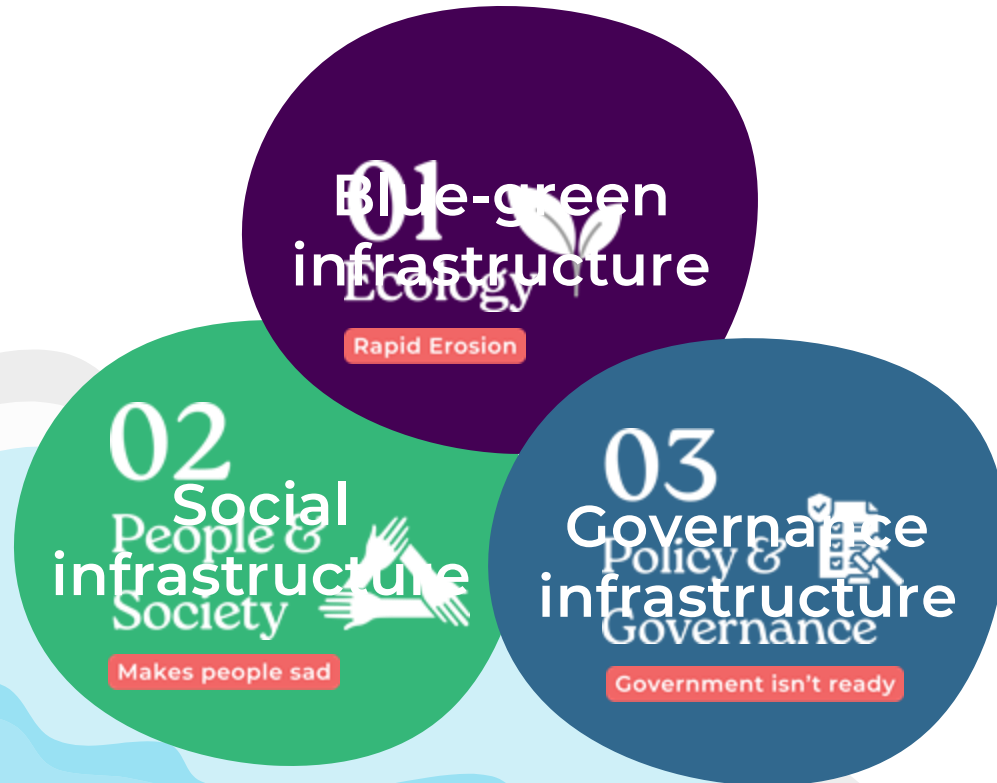
03

Policy &
Governance



Government isn't ready

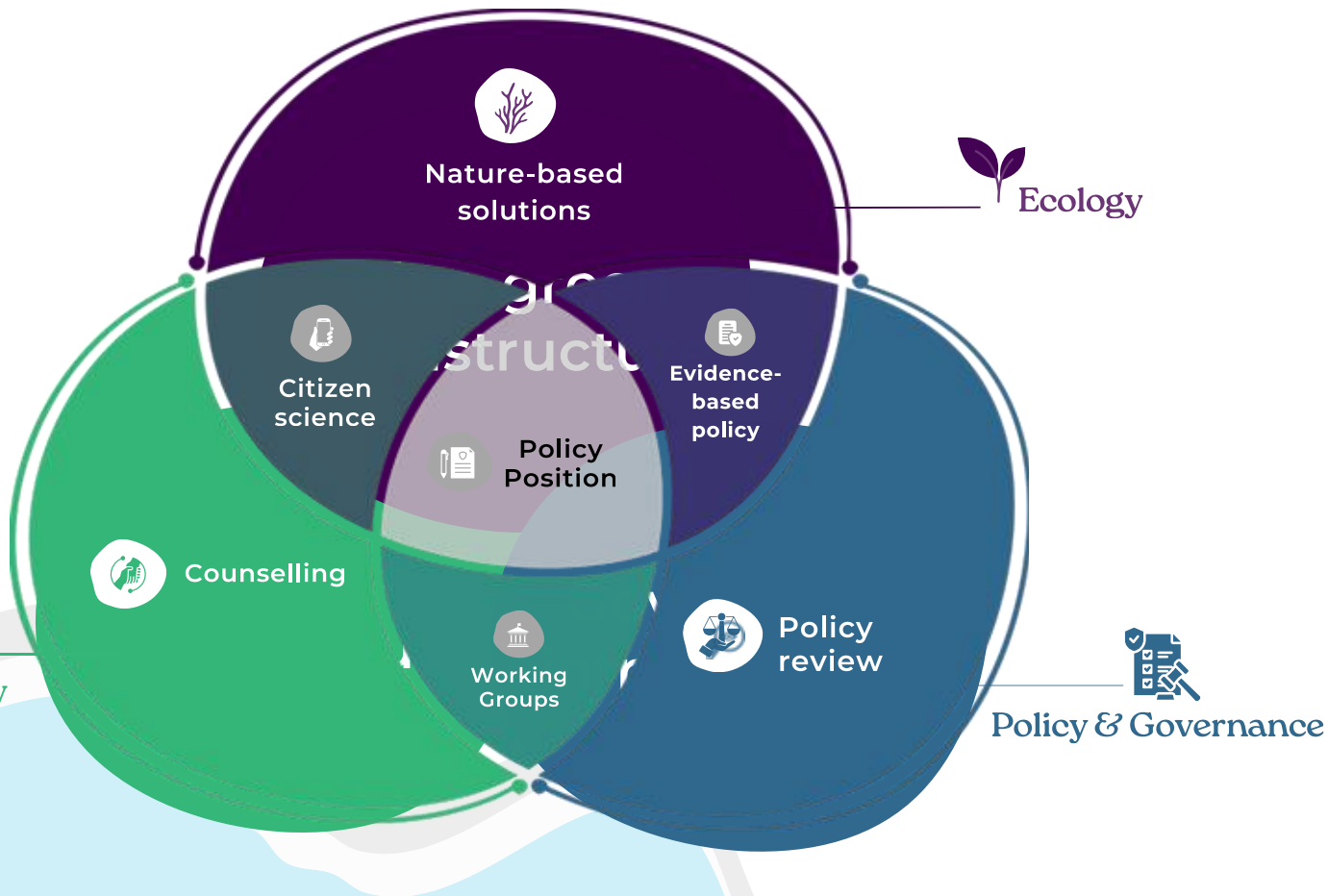
The solution^{1/}



Coastal Future CoLabs Pilot



People & Society



Innovation:

CoLabs Pilot approach



How our approach is different

1. Triple-infrastructure model

Simultaneously develops blue-green, social & governance infrastructure

2. Trauma-informed and place-based

Mental health and storytelling are central, not secondary

3. Policy-influencing from the ground up

Designed to scale, yet deeply rooted in a real local point (Garden Island Sands)

4. Replication pathway

Flexible that can be adapted in other LGAs across Tasmania and Australia, not one-size-fits-all

Credible: CoLabs Pilot structure



UNIVERSITY of
TASMANIA

1

CoLab 1

November 2025



Nature-based
planting



CoastSnap
introduction



Nature
Connection
recording



Council
conservations

2

CoLab 2

February 2026



Nature-based
planting



CoastSnap
updates



Climate anxiety
workshop

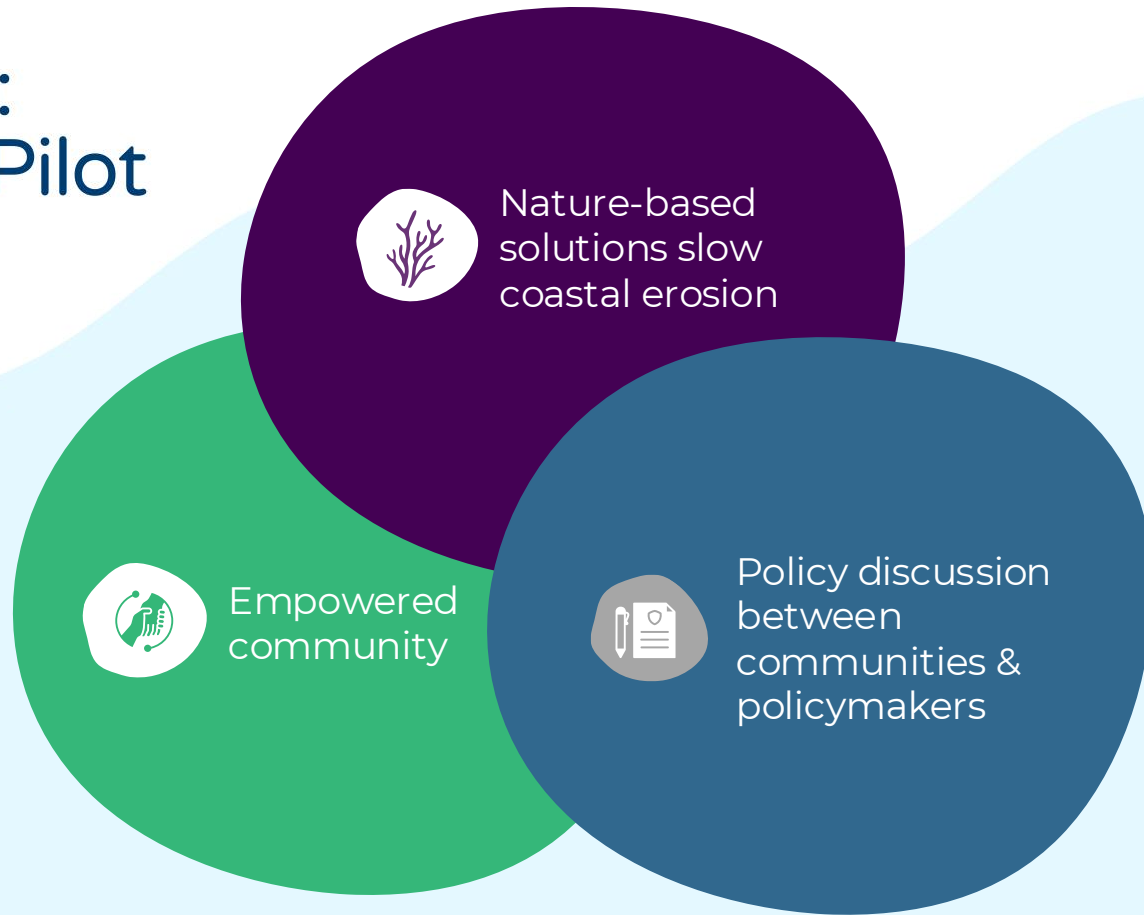


Policy
presentation

3



Credible: CoLabs Pilot



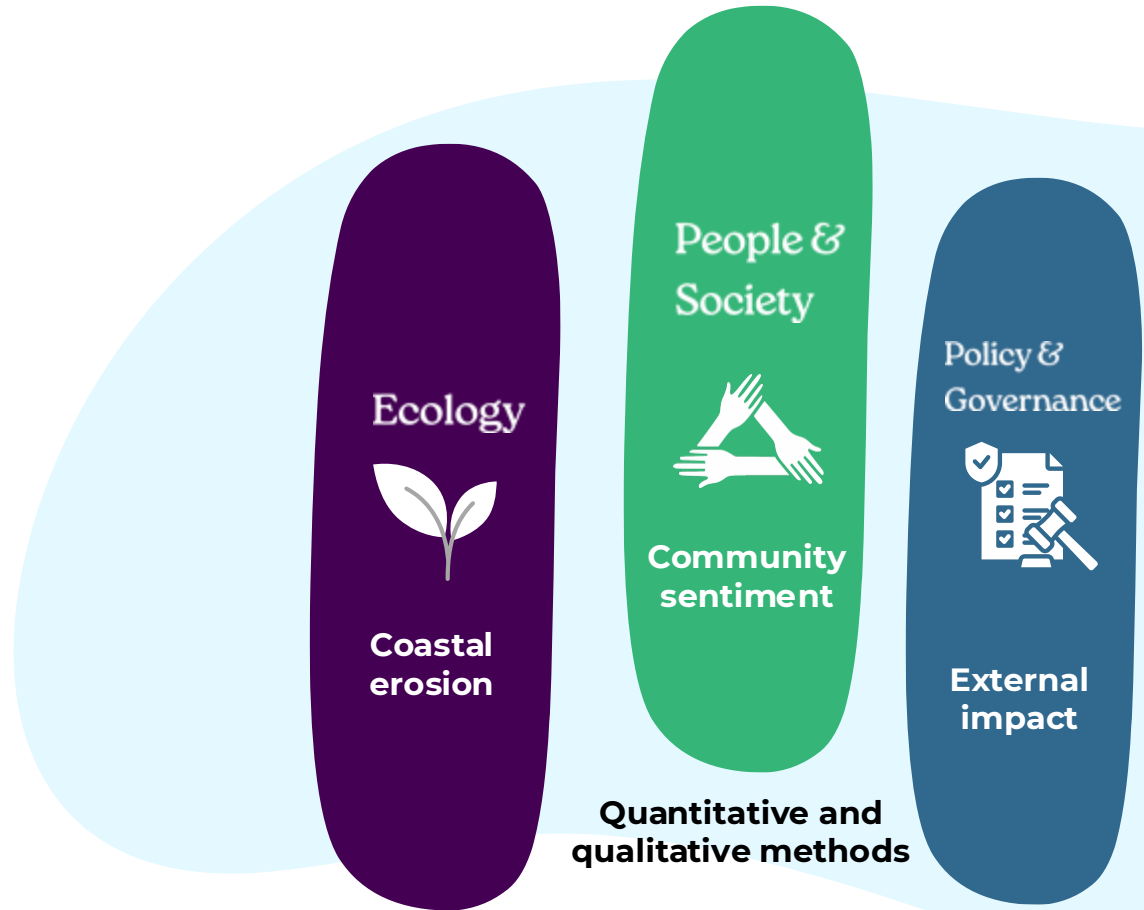
Effective:

CoLabs Pilot collaborations



Effective:

Monitoring, Evaluation, Reporting, and Improvement (MERI)

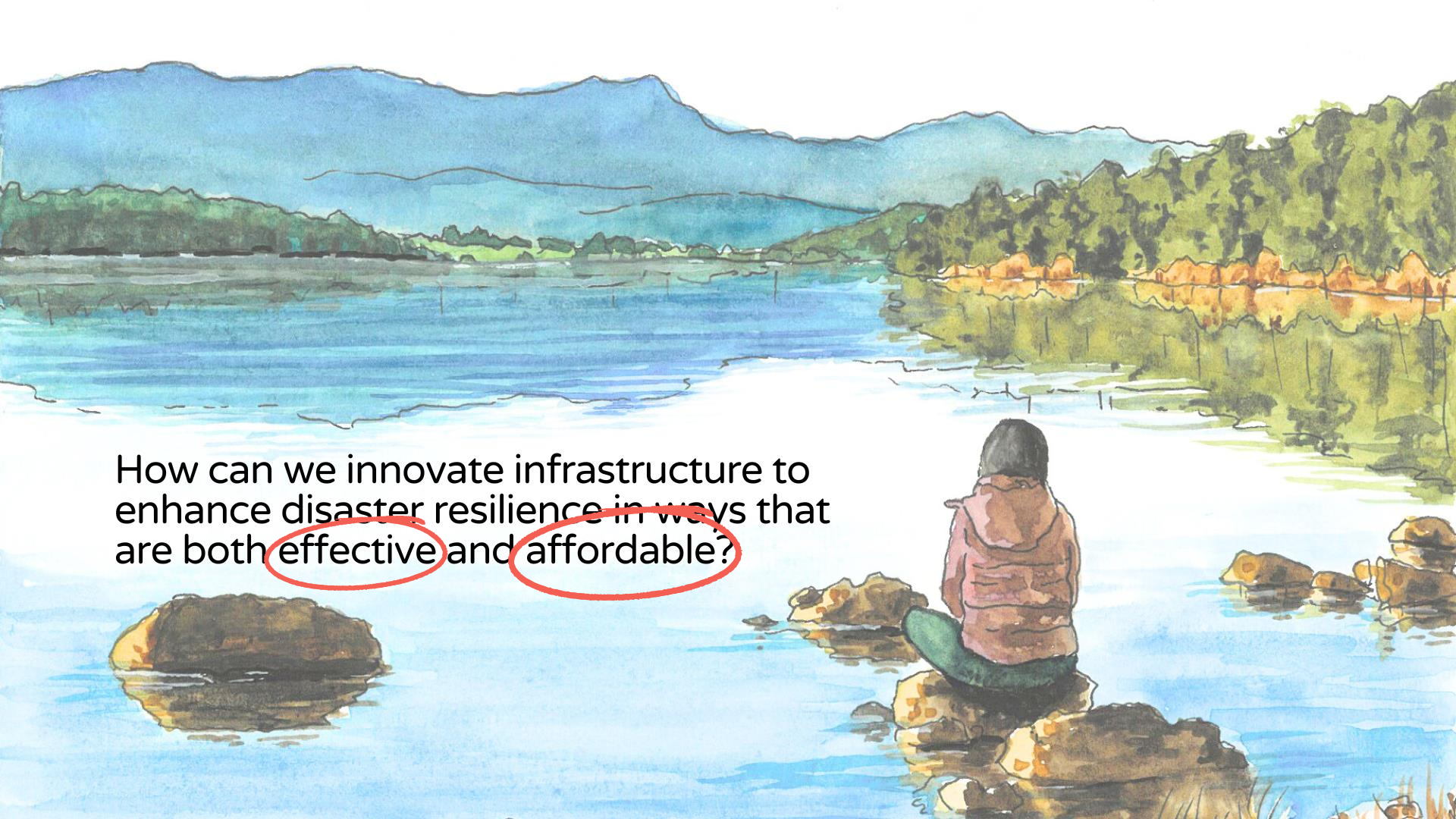




ADAPTABLE

Expanding Coastal Future CoLabs across Australia

Source: Digital Earth Australia

A watercolor illustration of a person sitting on rocks by a lake, looking out at a forested shoreline and distant mountains. The person is wearing a pink jacket and green pants, sitting on a large rock in the foreground. The lake is blue with some white foam near the shore. The background features a dense forest of green and yellow trees, and distant blue mountains under a white sky. The text "How can we innovate infrastructure to enhance disaster resilience in ways that are both effective and affordable?" is overlaid on the image, with the words "effective" and "affordable" circled in red.

How can we innovate infrastructure to enhance disaster resilience in ways that are both effective and affordable?



UNIVERSITY of
TASMANIA

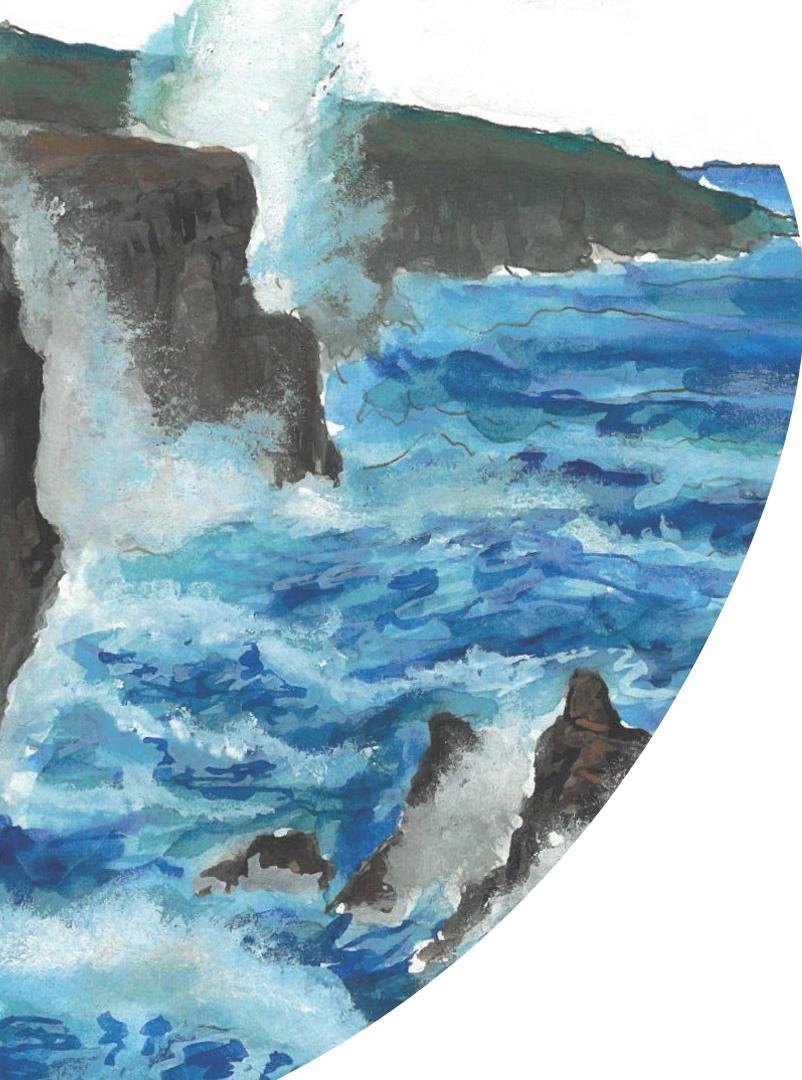


**Friends of Garden
Island Creek**



Coastal Futures CoLabs Pilot





References

- Cooley, S.J., Jones, C.R., Kurtz, A., & Robertson, N. (2020). 'Into the Wild': A meta-synthesis of talking therapy in natural outdoor spaces. *Clinical Psychology Review*, 77, 101841.
- De Silva, A., Amaratunga, D., & Haigh, R. (2022). Green and Blue Infrastructure as Nature-Based Better Preparedness Solutions for Disaster Risk Reduction: Key Policy Aspects. *Sustainability*, 14, 16155.
- Jozaei, J., Mitchell, M., & Clement, S. (2020). Using a resilience thinking approach to improve coastal governance responses to complexity and uncertainty: A Tasmanian case study, Australia. *Journal of Environmental Management*, 253, 109662.
- Lawrance, E.L., Thompson, R., Newberry Le Vay, J., Page, L., & Jennings, N. (2022). The Impact of Climate Change on Mental Health and Emotional Wellbeing: A Narrative Review of Current Evidence, and its Implications. *International Review of Psychiatry*, 34(5), 443-498.
- Minkler, M. (2010). Linking Science and Policy Through Community-Based Participatory Research to Study and Address Health Disparities. *American Journal of Public Health*, 100, S81_S87, <https://doi.org/10.2105/AJPH.2009.165720>.
- Perricone, V., Mutalipassi, M., Mele, A., Buono, M., Vicinanza, D., & Contestabile, P. (2023). Nature-based and bioinspired solutions for coastal protection: an overview among key ecosystems and a promising pathway for new functional and sustainable designs. *ICES Journal of Marine Science*, 80(5), 1218-1239.
- Pichler, E., Connell, S.D., & McAfee, D. (2025). Improving human well-being through community-led coastal restoration. *Biological Conservation*, 301, 110892

Artworks
by:

BOHIE
→

AMY
REID

Video
by:

MARCUS
TURNBULL